

ERRATA

Volume 97, Number 2, November 28, 1980

In "Isolation of a New Calmodulin-Binding Protein from Rat Brain," by Shohei Maéikawa and Teruo Abe, pp. 621-627, Fig. 2 on p. 624 appeared in inverted form. The corrected Fig. 2 and legend are reproduced here.

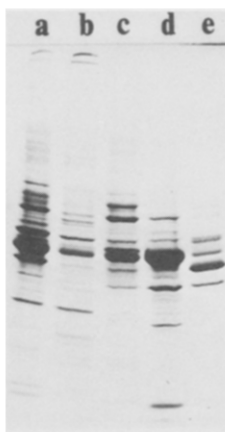


Fig. 2. SDS-polyacrylamide gel electrophoresis of CBPs obtained by stepwise elution of a calmodulin-Sepharose 4B column. For details see MATERIALS AND METHODS. Eluates with Solution A + 1 M NaCl (b), Solution A + 3 M urea (c), Solution A + 6 M urea (d), Solution B (e). Lane a shows CBPs obtained by direct elution with Solution B and is the same as in Fig. 1-I-A.

---

Volume 97, Number 2, November 28, 1980

In "Isolation of Thymone A from Bovine Thymus: Partial Chemical and Biological Characterization," by Karl Folkers, Naoki Sakura, Teresa Kubiak, and Henryk Stepień, pp. 595-600: Page 595, lines 6 to 8 of the Summary, the amino acid composition of thymone A should read "ca. 68-71 amino acids," instead of "≥ 68-71 amino acids," and "The MW by behavior over Bio-Gel P-6" should read "≥ 6000," instead of "ca. 8000."